



石家莊鐵道大學
SHIJIAZHUANG TIEDAO UNIVERSITY

网络精品课程

A General Survey of English-Speaking Countries

6. The First Inhabitants

主讲：李兰冬



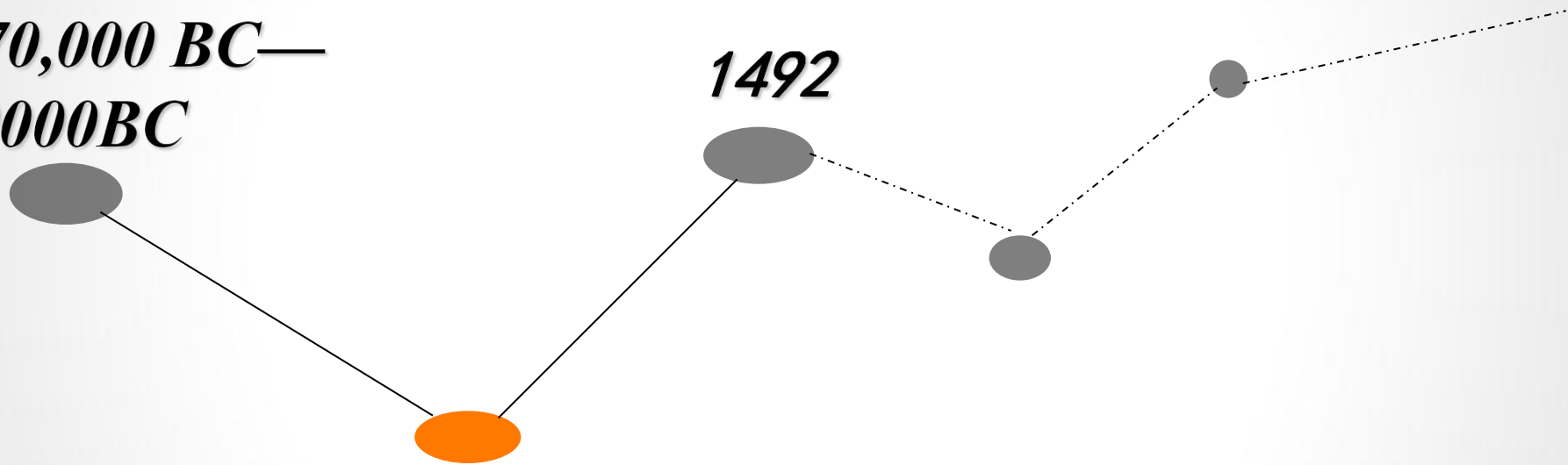
The First Inhabitants

美国的最初居民

*About 70,000 BC—
10000BC*

1492

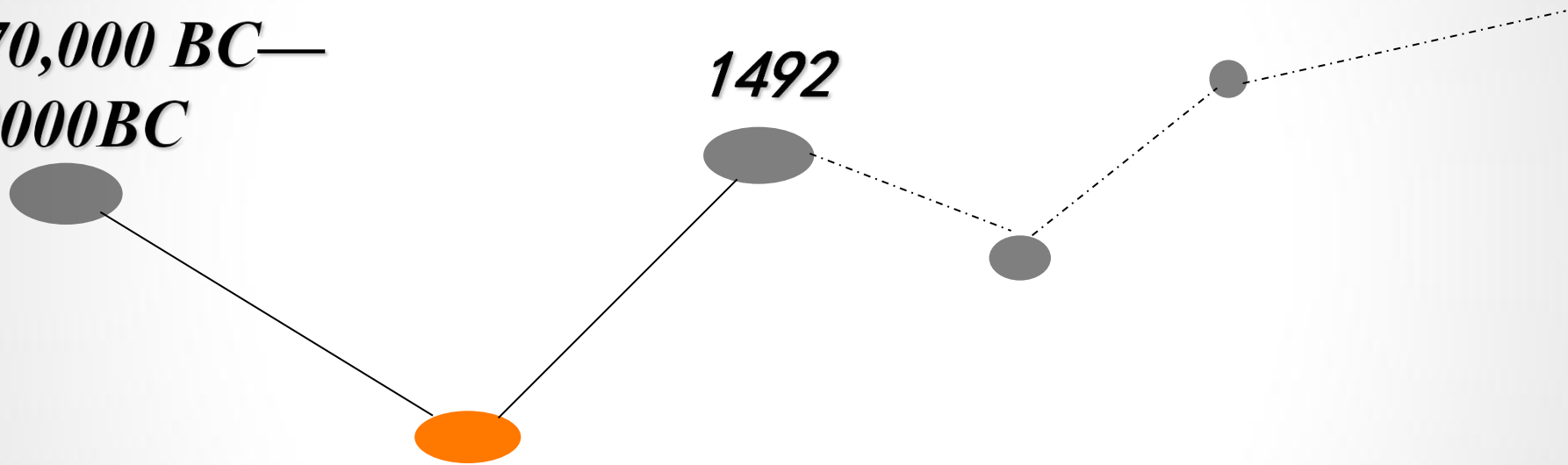
*Between 15,000and
40.000 years ago*



*About 70,000 BC—
10000BC*

1492

*Between 15,000and
40.000 years ago*



The last Ice Age

*About 70,000 BC—
10000BC*

楚克其海

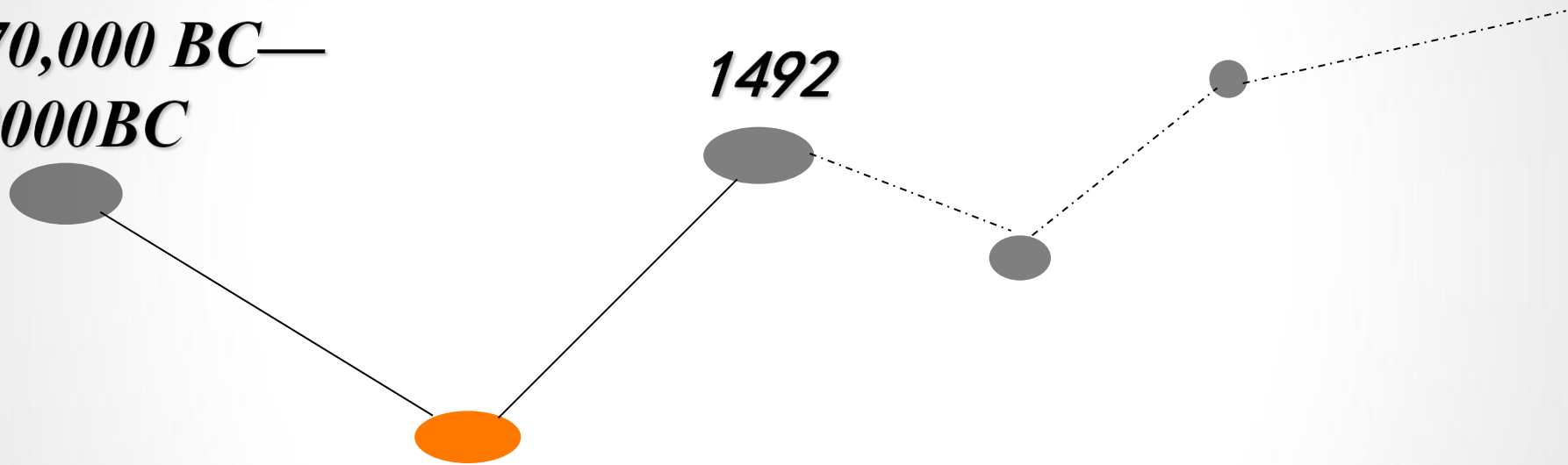
白令海



*About 70,000 BC—
10000BC*

1492

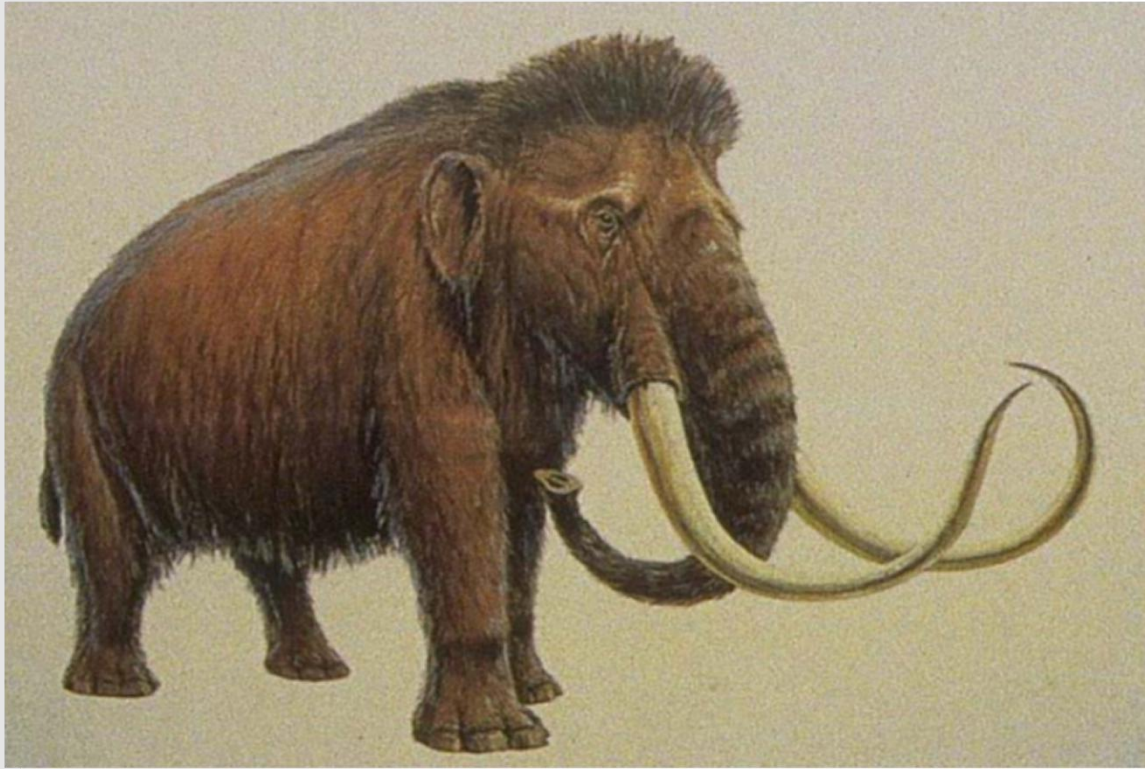
*Between 15,000and
40.000 years ago*





Bering Land Bridge (白令陆桥)

From about 25,000 to nearly 10,000 years ago, sea levels were as much as 135 m lower than they are today, and a natural land bridge, called Beringia, linked present-day Siberia and Alaska. Most anthropologists believe that Native Americans descend from Asian peoples who migrated into North America by way of this land bridge.



Mammoth



Buffalo





ICE AGE 4

CONTINENTAL DRIFT

ONLY IN CINEMAS

Mammoth

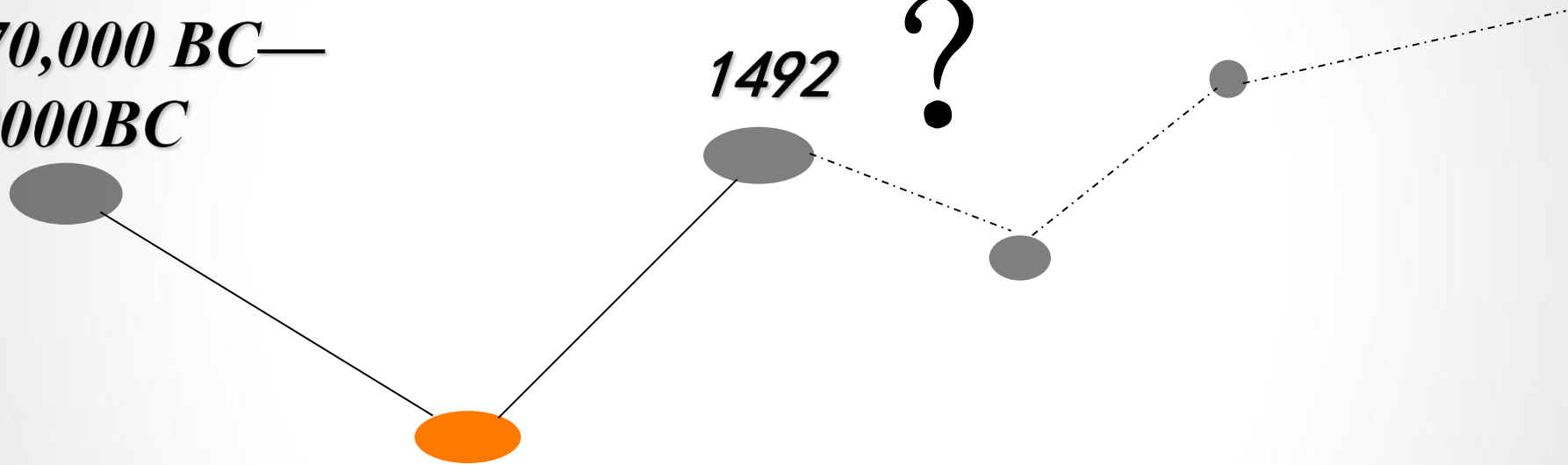


*About 70,000 BC—
10000BC*

1492

?

*Between 15,000and
40.000 years ago*



Review

• Today most anthropologists agree that America's first settlers came from northeast and entered the New World through Bering Strait Asia Ice Age during the last _____.

• The earliest Americans must have crossed the bridge from giant buffalos into mammoths Alaska as bands of hunters followed big animals such as _____ and _____.

• Why the first inhabitants were very different from one another in physical characteristics, skills, and talents?

The End